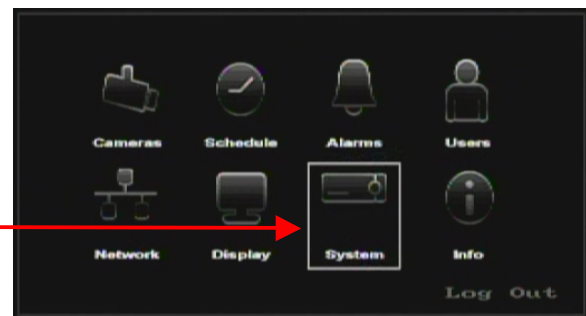


Programming Daylight Saving Time on the SymSafe, SymSafe Pro and SymDec 16 plus 4 Digital Video Recorders

For customers who have the SymSafe, SymSafe Pro or SymDec 16 plus 4 recorders, the units have been designed with the new Daylight Saving Time changes in mind. A qualified Installer or Service person must change these programming settings. There are three ways to make the change and they are, from the front panel, SymNav software and the SymBrowser web interface.

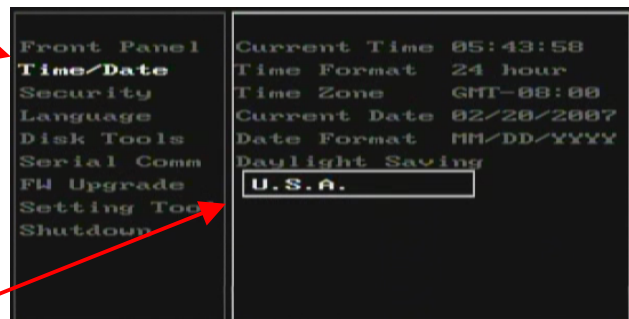
To change settings from the front panel, perform the following operations:

1. Enter the menu with Admin rights.
(Refer to the User Manual for instructions on how to access the menus).
2. Move to the System icon and press ENTER.



3. From the System menu screen move down to Time/Date and check the Daylight Saving Setting.

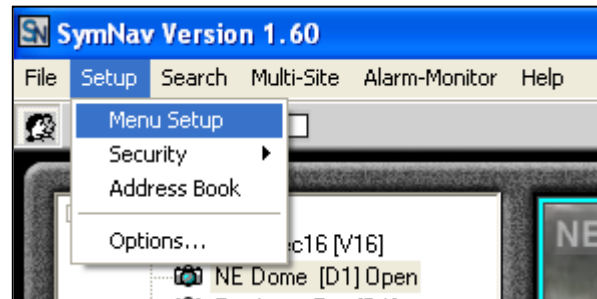
4. If Daylight Saving is set to U.S.A. then you can exit the menu, no change is needed.
5. If Daylight Saving is set to North America then press ENTER.
6. Move down to the Daylight Saving Setting and press ENTER.



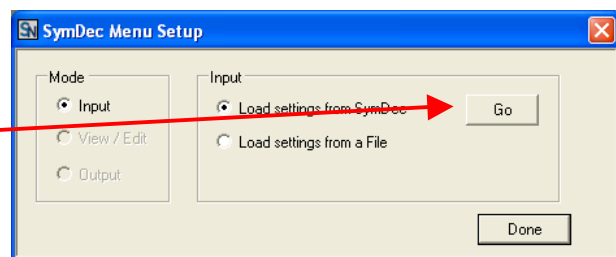
7. Using the Down arrow, change this setting to "U.S.A." and press ENTER.
8. Press MENU to exit. The unit is now configured for the new Daylight Saving Time start and stop dates.

To change settings from SymNav Software (V1.60.0071 or later), perform the following operations. See the User manual for instructions on connecting to the digital recorder.

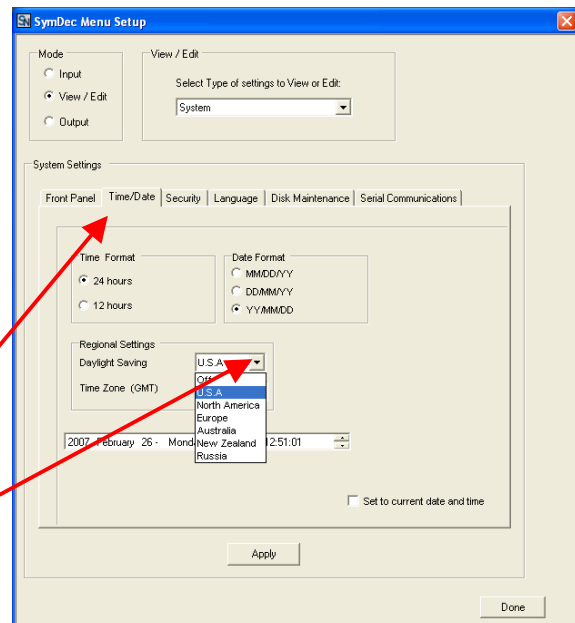
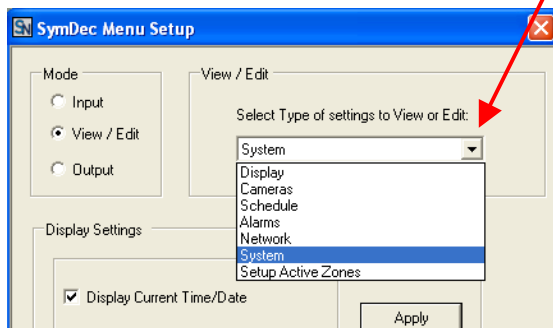
1. Once connected to the unit, click on "Setup" and then click on "Menu Setup". This will bring up the small "SymDec Menu Setup" screen.



2. The Mode section should be set to "Input" and the Input section should be set to "Load settings from SymDec". Click on the "Go" button to bring up the large "Menu Setup Screen".



3. In the View/Edit section click on the DOWN arrow next to the drop down menu and select "System".

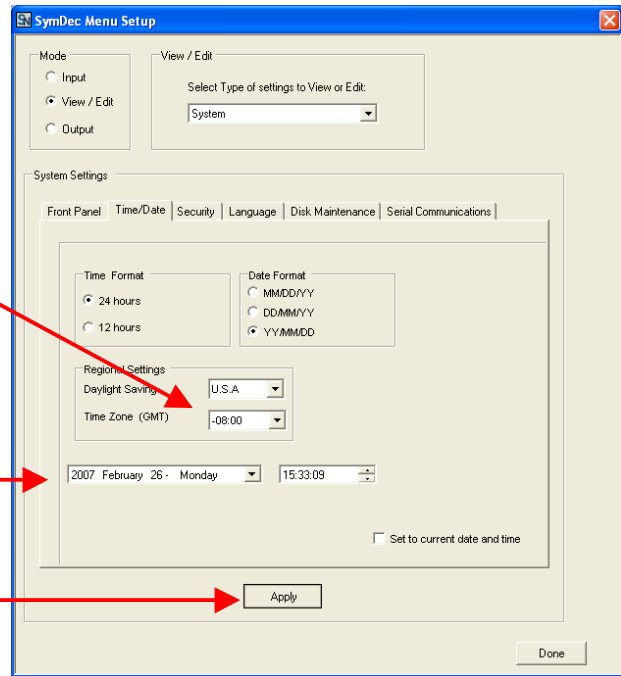


4. In the "System Settings" section click on the "Time/Date" tab.
5. In the "Regional Settings" section click on the DOWN arrow to the right of the "Daylight Saving" setting. Select "USA" for the new DST setting for 2007. If the "Daylight Saving" setting is already at "USA" click on the "Done" button. Then click on the "Done" button again. There is no change needed.

6. Ensure the time zone is set correctly.

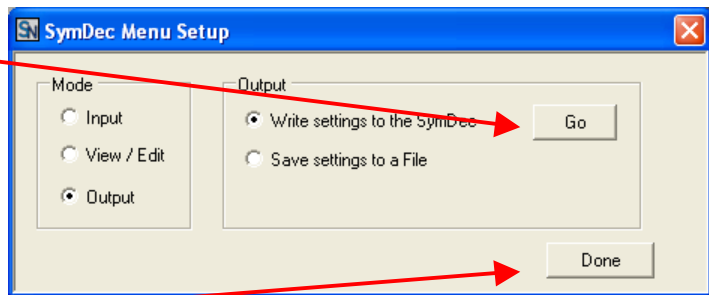
7. Ensure the time and date are correct.

8. Click on Apply.



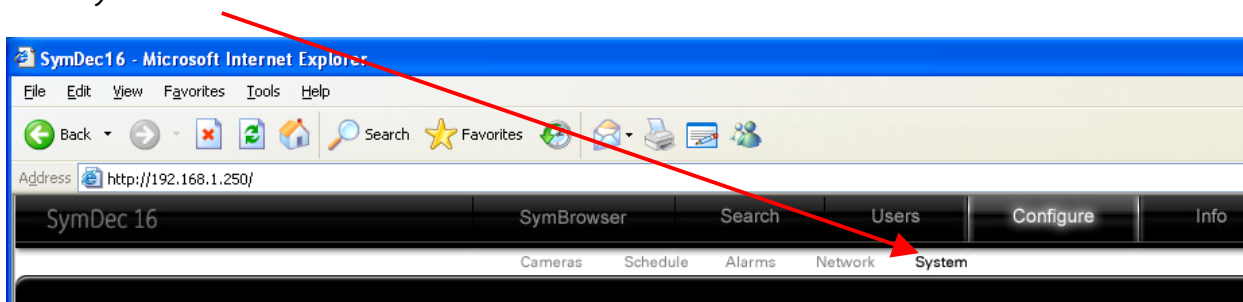
9. In the Mode section at top left of the window click on "Output" to bring up the small "SymDec Menu Setup" screen and then click on "Go".

10. Then click on DONE. The unit is now configured for the new Daylight Saving Time start and stop dates.

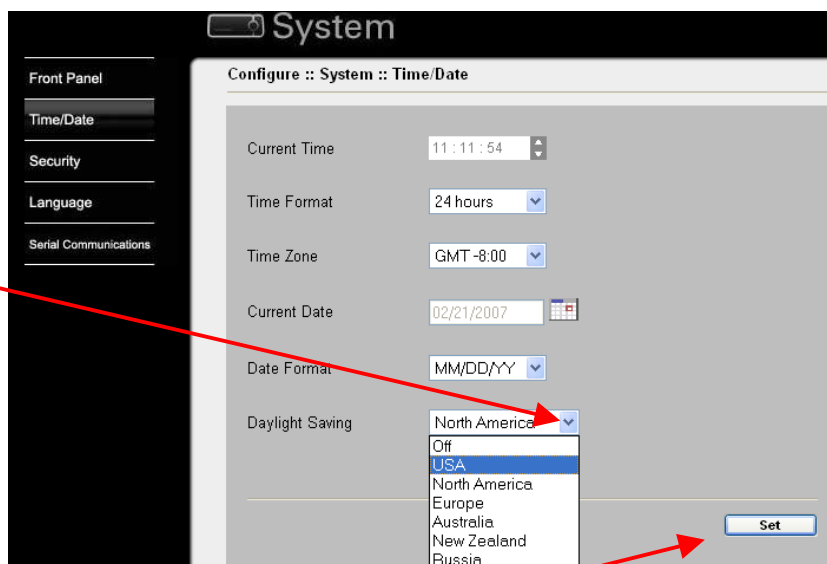


To change these settings from the SymBrowser web interface, perform the following operations:

1. Using Internet Explorer, connect to the unit. You will need to log in with your user name and password. It is the same as what you use to log in at the unit. Refer to the User Manual for instructions on how to access the web interface.
2. When the web interface appears, move the mouse over the “Configure” menu item and move down to the white menu bar, then click on the “System” menu item.



3. In the “System” window click on the “Time/Date” menu item.
4. If the Daylight Saving setting shows USA then no change is needed.
5. If the Daylight Saving setting shows North America then click the DOWN arrow on the right and select USA.



6. Once “USA” is displayed, click on the SET button. The unit is now configured for the new Daylight Saving Time start and stop dates.